

PROJETO DE ARQUITETURA



EMPREITADA

VIRTUAL PROJECTOS
GABINETE DE ARQUITETURA E ENGENHARIA, LDA

TRABALHOS

- . BALNEÁRIOS
- . GINÁSIO
- . BAR E ESPLANADA
- . SEDE DO CLUBE
- . REQUALIFICAÇÃO DOS CAMPOS
- . REQUALIFICAÇÃO DA BANCADA E
- . ESPAÇOS VERDES

EMPREITEIRO

PROTECNIL

PRAZO

360 DIAS

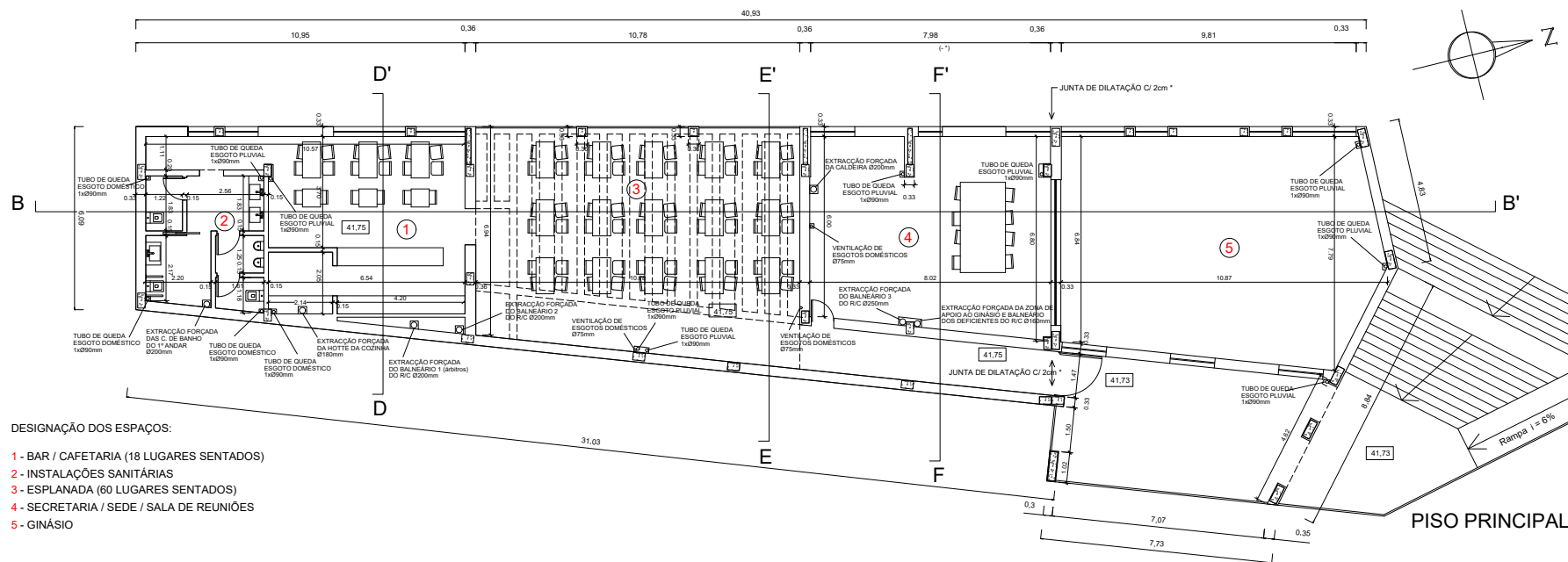
VALOR DA OBRA

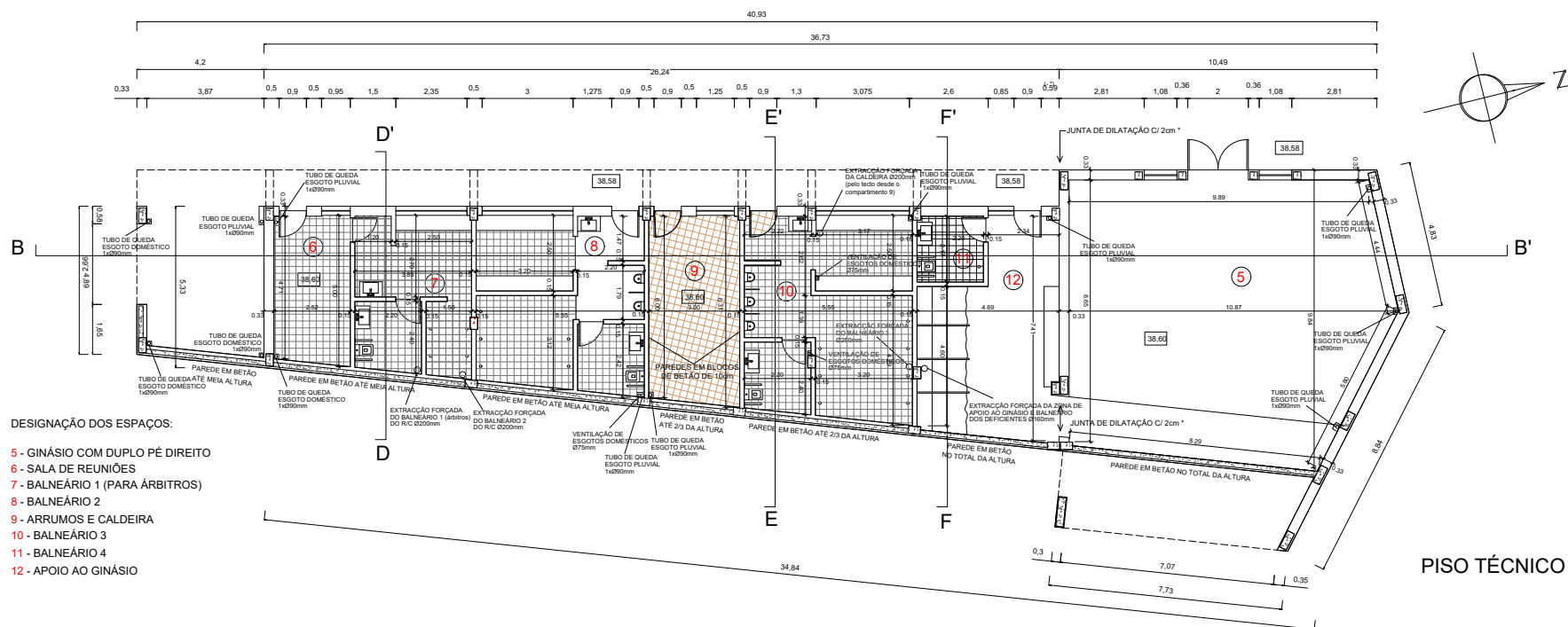
529.152,14 €

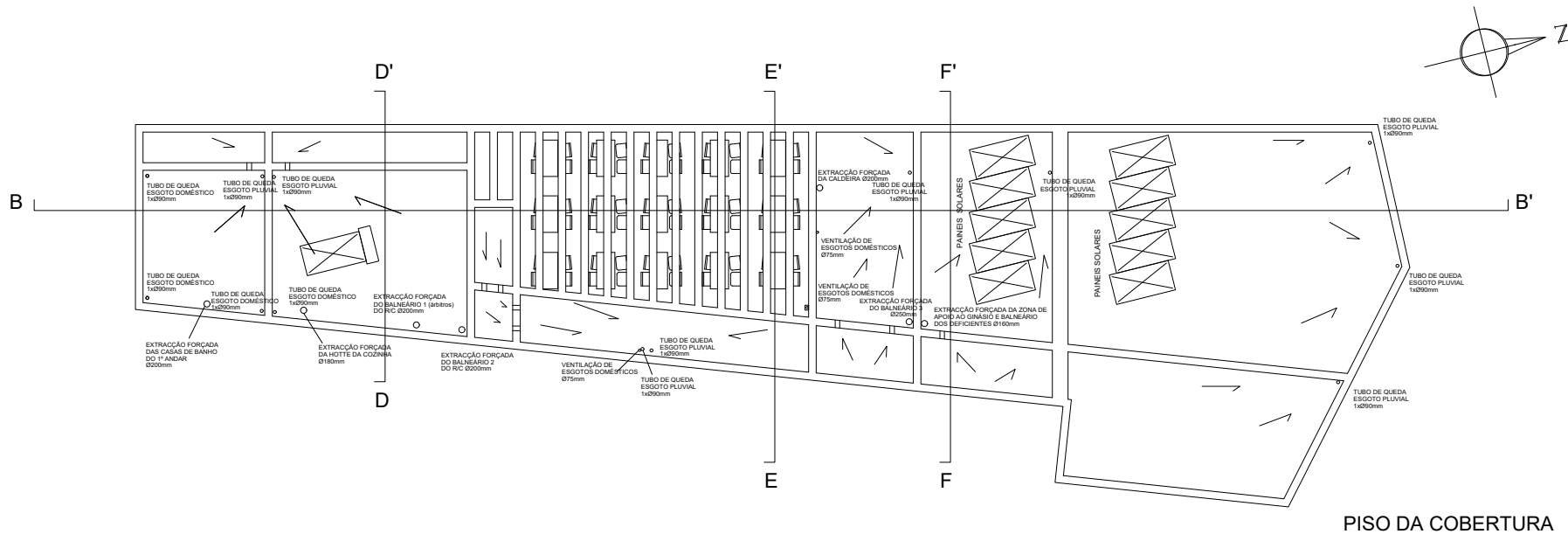


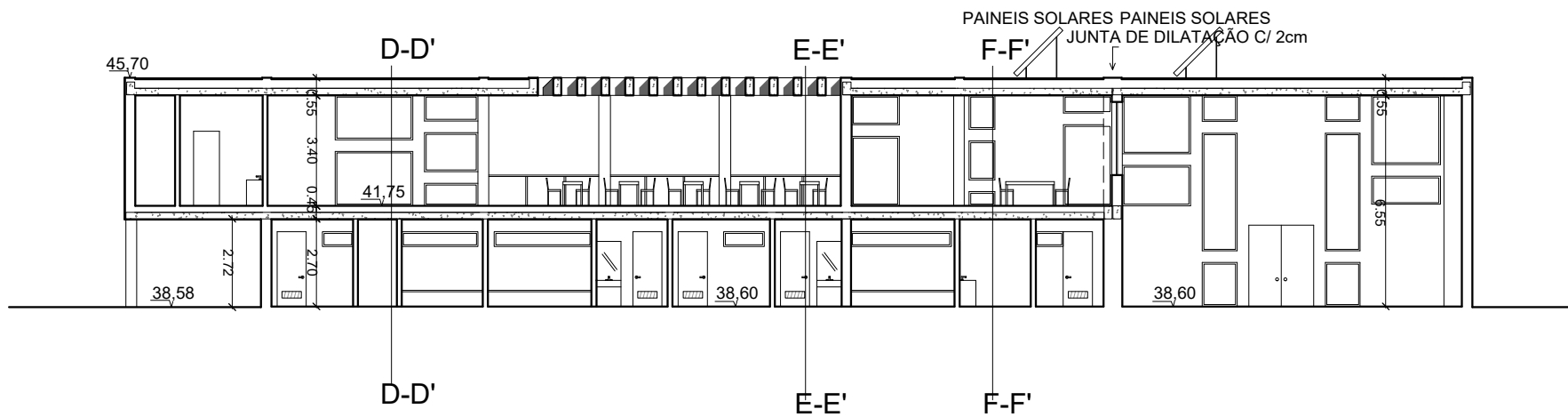
ÁREA DE CONSTRUÇÃO
560,00 m²

IMPLANTAÇÃO

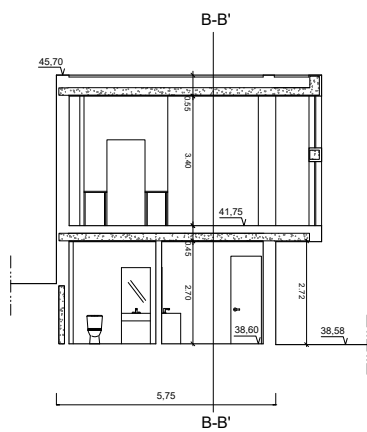




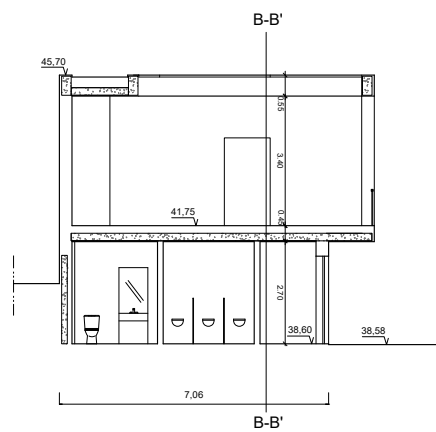




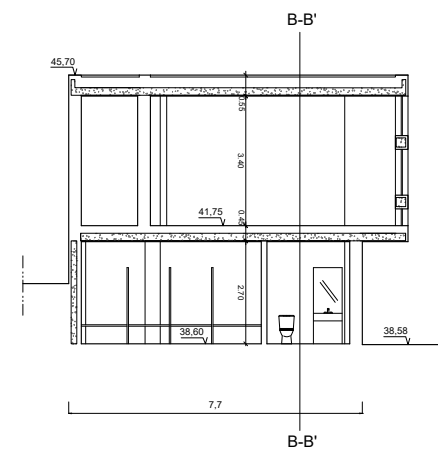
CORTE B/B'



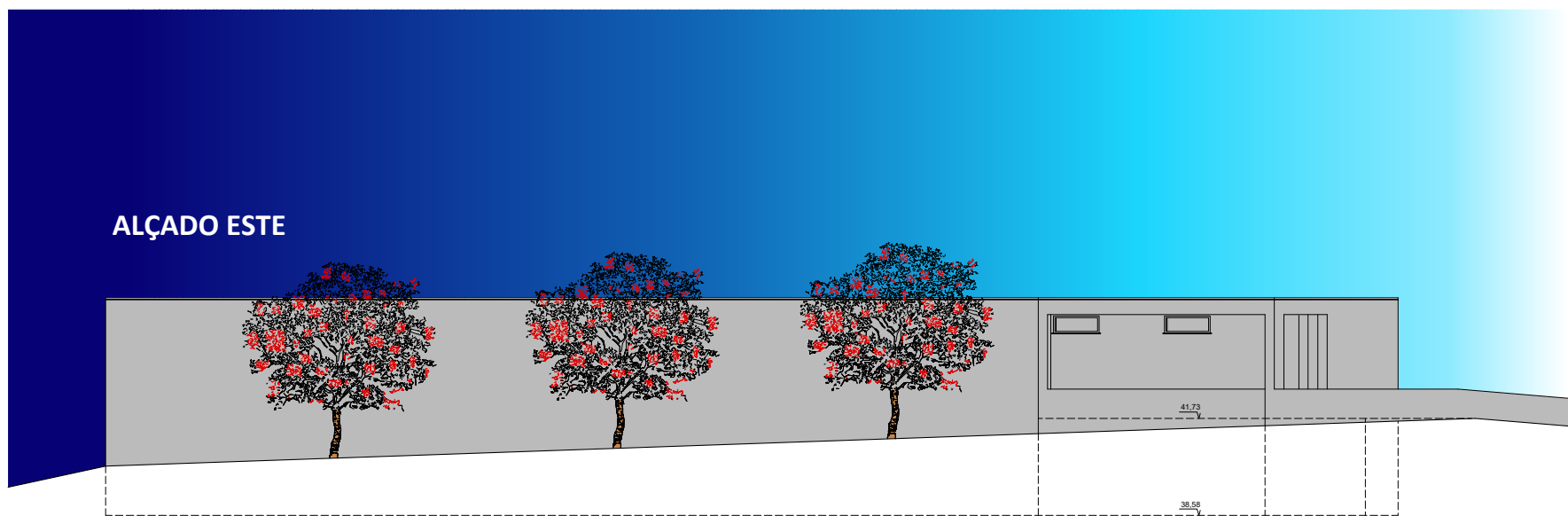
CORTE D/D'

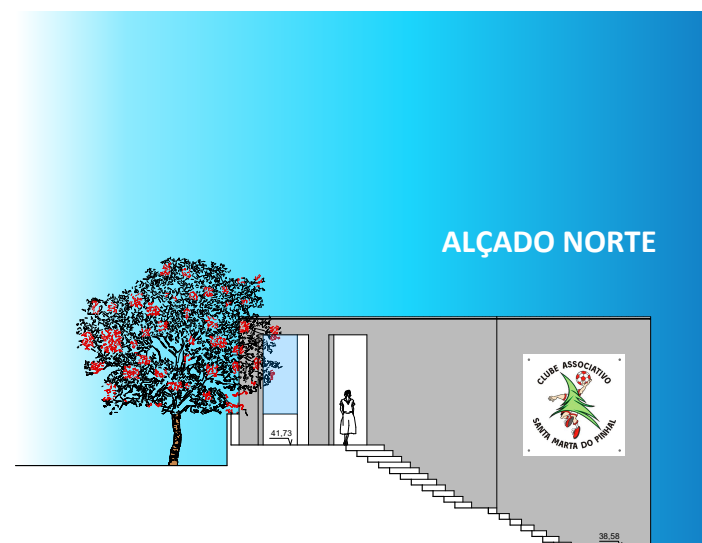
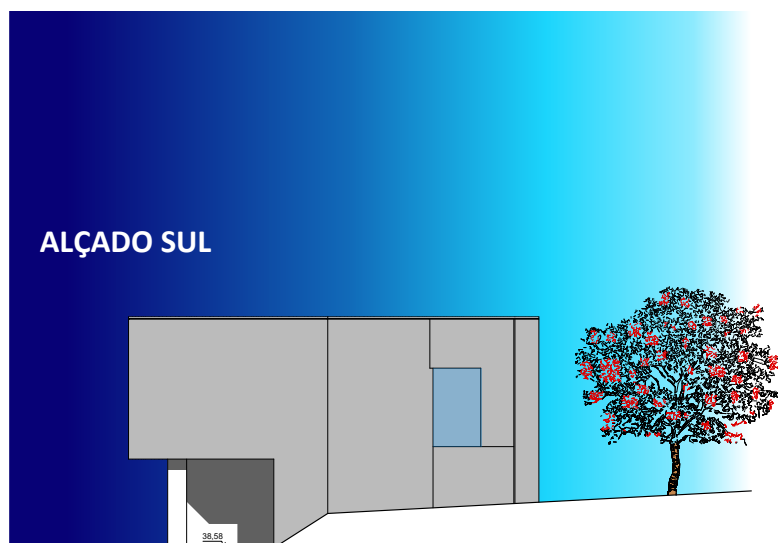


CORTE E/E'



CORTE F/F'









...OBRIGADO